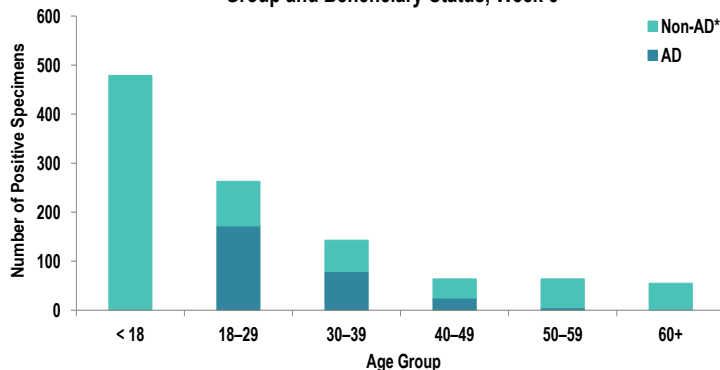


SUMMARY

Influenza activity continues to decrease in the Army population—10.3% of specimens tested positive for influenza A in Week 5 compared to 12.8% in Week 4. Influenza B percent positivity decreased slightly from Week 4 to Week 5, and RSV activity in the Army population continues to decrease. Ten influenza-associated hospitalizations were reported during surveillance Week 5, which is double the number reported during Week 4. Nationwide, influenza activity remains elevated, with 15.7% of specimens tested by clinical laboratories being positive for influenza A or B, according to the Centers for Disease Control and Prevention (CDC). Although respiratory illness activity is stable and decreasing in some geographical areas in the U.S., it is still important to take preventive actions, like avoiding close contact with people who are sick or if you are sick, washing hands thoroughly, and disinfecting frequently touched surfaces.

DEMOGRAPHICS

Positive Respiratory Specimen Results from Army MTFs by Age Group and Beneficiary Status, Week 5



AD: Two hundred and eighty-one positive respiratory specimens were collected from active duty (AD) service members (SMs) during Week 4; 61.2% (n=172) of the positive specimens were collected from SMs 18 – 29 years of age.

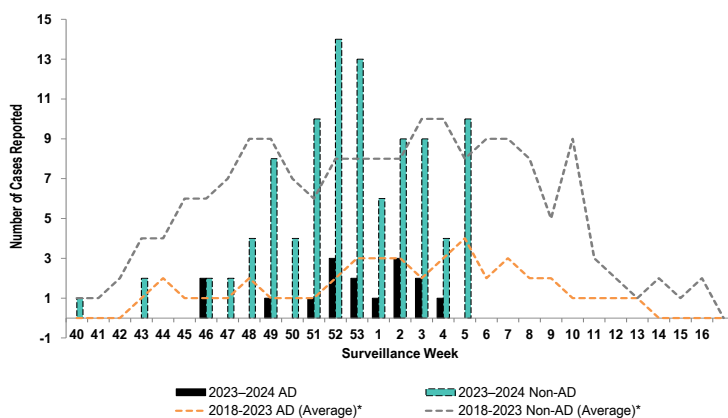
Non-AD: Seven hundred and eighty-seven positive respiratory specimens were collected from non-AD individuals during Week 5; 60.9% (n=479) of the positive specimens were collected from individuals under 18 years of age and 11.6% (n=91) from individuals who are 18 – 29 years old.

*Non-AD=All individuals that are not active duty service members.

The age and beneficiary status of some cases were not available. Therefore, all calculations involving these variables were conducted using only available data. Differences in total results, and age- and beneficiary status-specific results may be noted throughout the report.

INFLUENZA-ASSOCIATED HOSPITALIZATIONS

Army Influenza-Associated Hospitalizations Reported in DRSi by Onset Week



Ten influenza-associated hospitalizations with an onset date in Week 5 were reported to the Disease Reporting System internet (DRSi). The season total thus far is 114 hospitalizations. The Week 5 average during the 2018 – 2023 seasons was 11 hospitalizations (with an average of 138 hospitalizations reported from the start of the season through Week 5).

The DRSi does not capture cases older than 65 years old for influenza-associated hospitalizations.

*Data from the 2020–2021 and 2021–2022 influenza seasons are not included in comparison calculations due to the unusually low incidence of influenza.

Data are preliminary and subject to change.

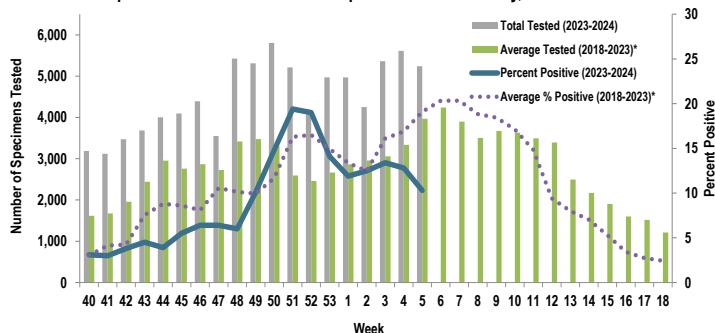
Disclaimer: The mention of any non-federal entity and/or its products is for informational purposes only, and not to be construed or interpreted, in any manner, as federal endorsement of that non-federal entity or its products.

Questions?
Email DCPH-A-DEP

INFLUENZA A ACTIVITY - ARMY

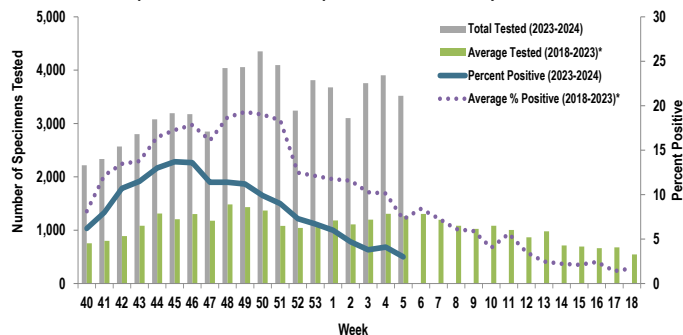
RSV ACTIVITY - ARMY

Proportion of Positive Influenza A Specimens for U.S. Army, 2023-2024



Of the 5,240 specimens tested for influenza A during Week 5, 10.3% (n=541) were positive. This was a decrease of two percentage points from Week 4.

Proportion of Positive RSV Specimens for U.S. Army, 2023-2024



Of the 3,519 specimens tested for RSV during Week 4, 3.0% (n=106) were positive. This was a decrease of one percentage point from Week 4.

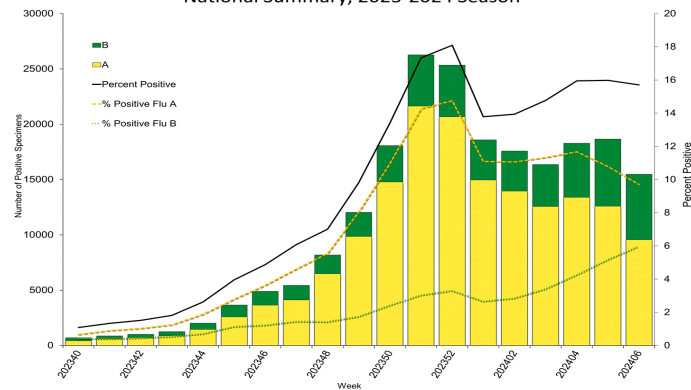
*Data from the 2020-2021 and 2021-2022 influenza seasons are not included in comparison calculations due to the unusually low incidence of influenza.

		Week 2	Week 3	Week 4	Week 5	Season Total
Army MTF Laboratory Results, 2023-24	Adenovirus	12	11	8	13	235
	Enterovirus	25	31	40	53	856
	Influenza A	532	720	716	541	8,698
	Influenza B	188	285	421	349	3,145
	Parainfluenza	8	9	14	6	211
	RSV	146	141	159	106	5,490
	Negative	3,387	4,216	4,314	4,246	68,285
	Total	4,298	5,413	5,672	5,314	86,920

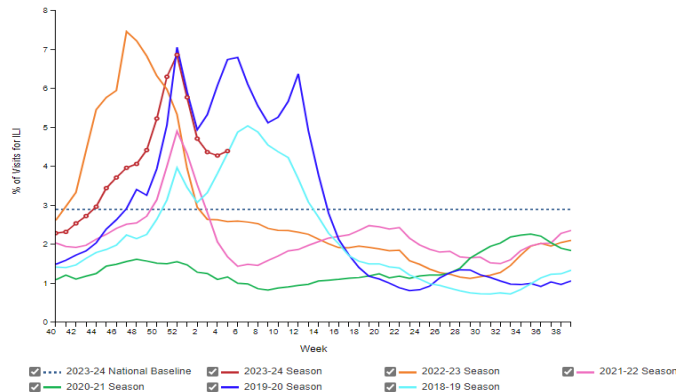
Of the 5,314 specimens tested during Week 5, 20.1% (n=1,068) were positive for any type of respiratory illness. Influenza A accounted for 50.7% (n=541) of the positive results, influenza B accounted for 32.7% (n=349), RSV accounted for 9.9% (n=106), enterovirus accounted for 5.0% (n=53), adenovirus accounted for 1.2% (n=13), and parainfluenza accounted for 0.6% (n=6). Additionally, the reported number of specimens tested decreased 6.3% from Week 4 to Week 5. Significantly more tests for influenza have been conducted this season compared to past seasons; 85,805 specimens have been tested for influenza A so far this season compared to the average of 53,101 specimens during the same time period in 2018-2023*.

INFLUENZA-LIKE ILLNESS (ILI) ACTIVITY - UNITED STATES

Influenza Positive Tests Reported to CDC by U.S. Clinical Laboratories, National Summary, 2023-2024 Season



Percentage of Outpatient Visits for Respiratory Illness Reported by The U.S. Outpatient Influenza-like Illness Surveillance Network (ILINet), Weekly National Summary, 2023-24 Season and Selected Previous Seasons

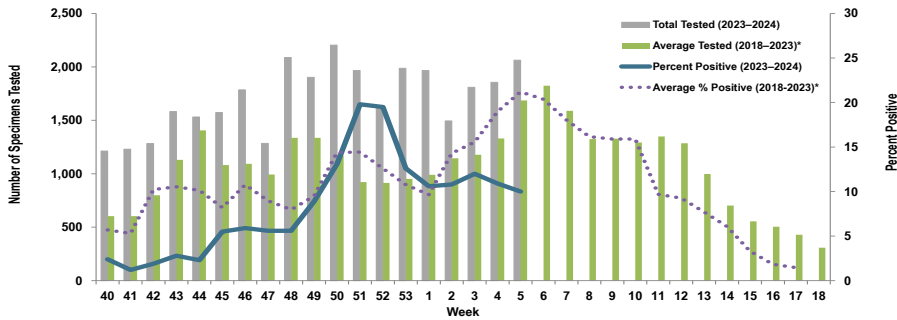


Nationwide in Week 5, incident ILI activity was 4.5%; this is above the national baseline of 2.9%. Additionally, a total of 98,553 specimens were tested for influenza by select clinical laboratories and submitted to the CDC; 15,474 (15.7%) were positive. Influenza A accounted for 61.8% (n=9,563) of the total positive specimens.

Locations providing Week 5 laboratory data as of 14 February 2024: Camp Zama, Carlisle Barracks, Ft. Belvoir, Ft. Bliss, Ft. Campbell, Ft. Cavazos, Ft. Carson, Ft. Drum, Ft. Eisenhower, Ft. Eustis, Ft. Gregg-Adams, Ft. Huachuca, Ft. Irwin, Ft. Jackson, Ft. Johnson, Ft. Knox, Ft. Leavenworth, Ft. Leonard Wood, Ft. Lewis, Ft. Liberty, Ft. Meade, Ft. Moore, Ft. Novosel, Ft. Riley, Ft. Sam Houston, Ft. Sill, Ft. Stewart, Ft. Wainwright, Korea, Landstuhl Regional Medical Center, Redstone Arsenal, Tripler Army Medical Center, the U.S. Military Academy at West Point, and Walter Reed National Military Medical Center.

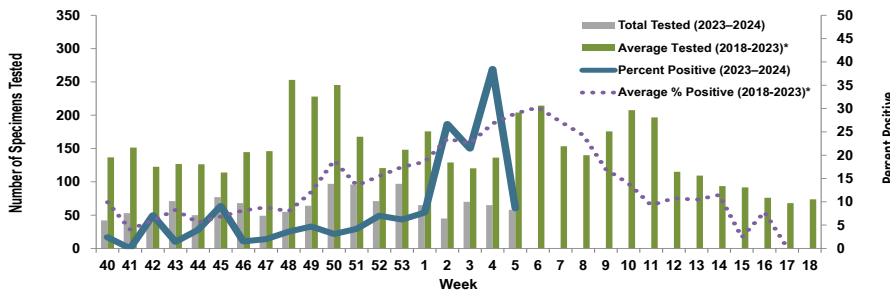
Proportion of Influenza A Positive Specimens by Week and Medical Readiness Command, 2023–2024 as Compared to 2018–2023*

Medical Readiness Command - East



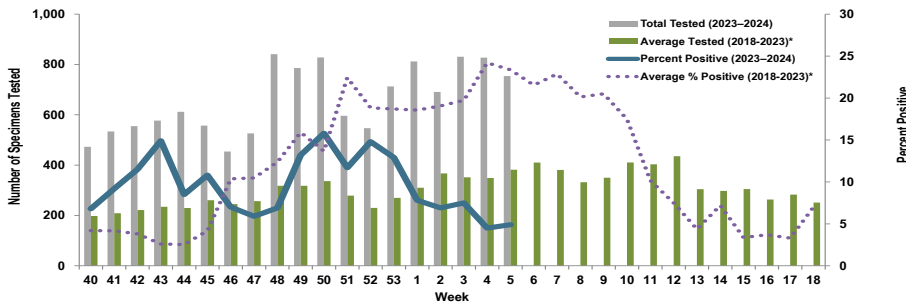
Week 5			
Age Group	AD	Non-AD	Season Total
< 18	0	69	1,055
18–29	44	15	577
30–39	16	12	465
40–49	8	10	324
50–59	1	21	247
60+	0	11	272
Total	69	138	2,940

Medical Readiness Command - Europe (Landstuhl Regional Medical Center)



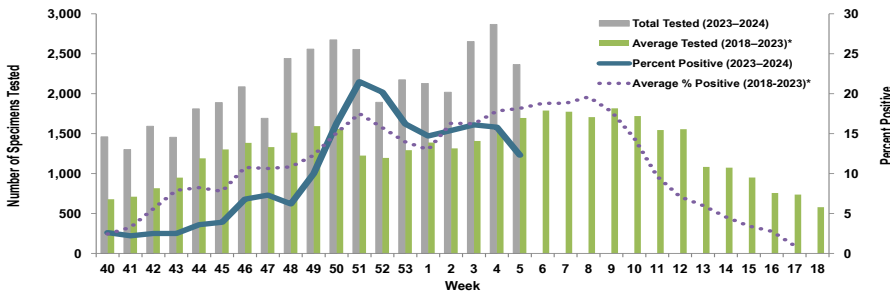
Week 5			
Age Group	AD	Non-AD	Season Total
< 18	0	2	38
18–29	0	0	20
30–39	0	1	16
40–49	1	0	16
50–59	0	1	7
60+	0	0	4
Total	1	4	101

Medical Readiness Command - Pacific



Week 5			
Age Group	AD	Non-AD	Season Total
< 18	0	18	324
18–29	7	0	400
30–39	3	1	234
40–49	0	1	92
50–59	1	2	47
60+	0	4	91
Total	11	26	1,188

Medical Readiness Command - West



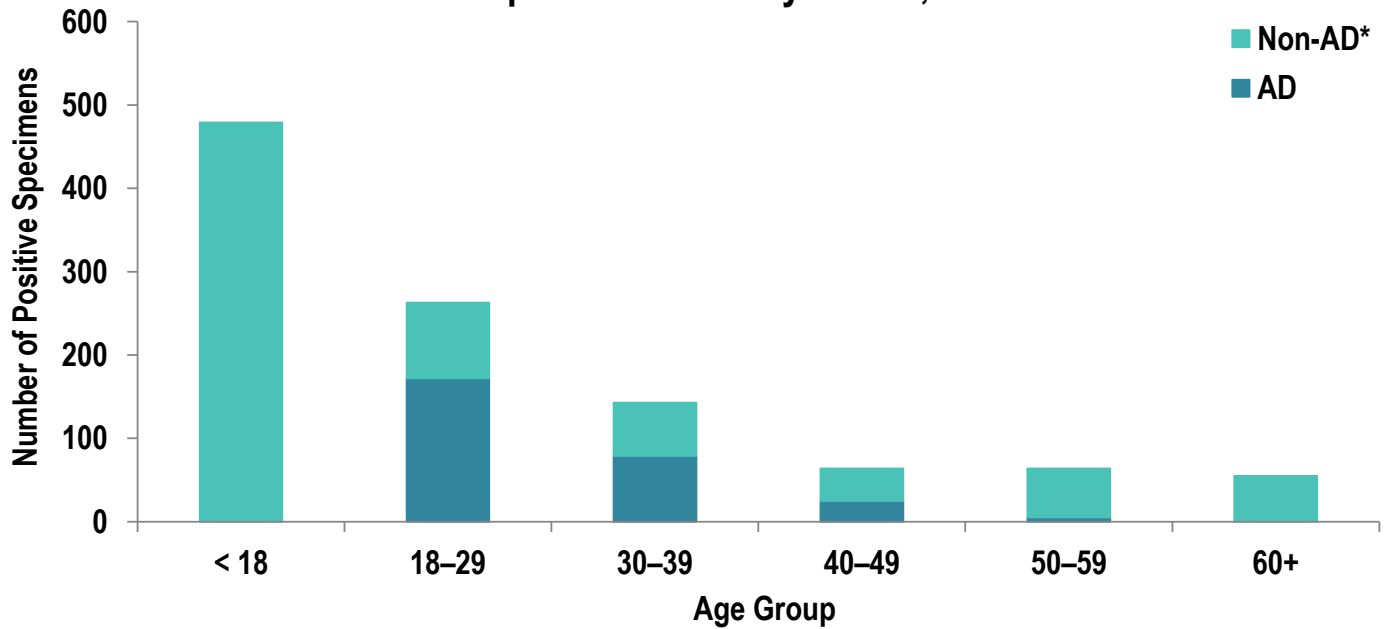
Week 5			
Age Group	AD	Non-AD	Season Total
< 18	0	88	1,649
18–29	43	47	1,025
30–39	23	22	693
40–49	7	13	416
50–59	1	27	312
60+	0	21	369
Total	74	218	4,464

*2018–2019, 2019–2020, and 2022–2023 influenza seasons. Data from the 2020–2021 and 2021–2022 influenza seasons are not included in comparison calculations due to the unusually low incidence of influenza.

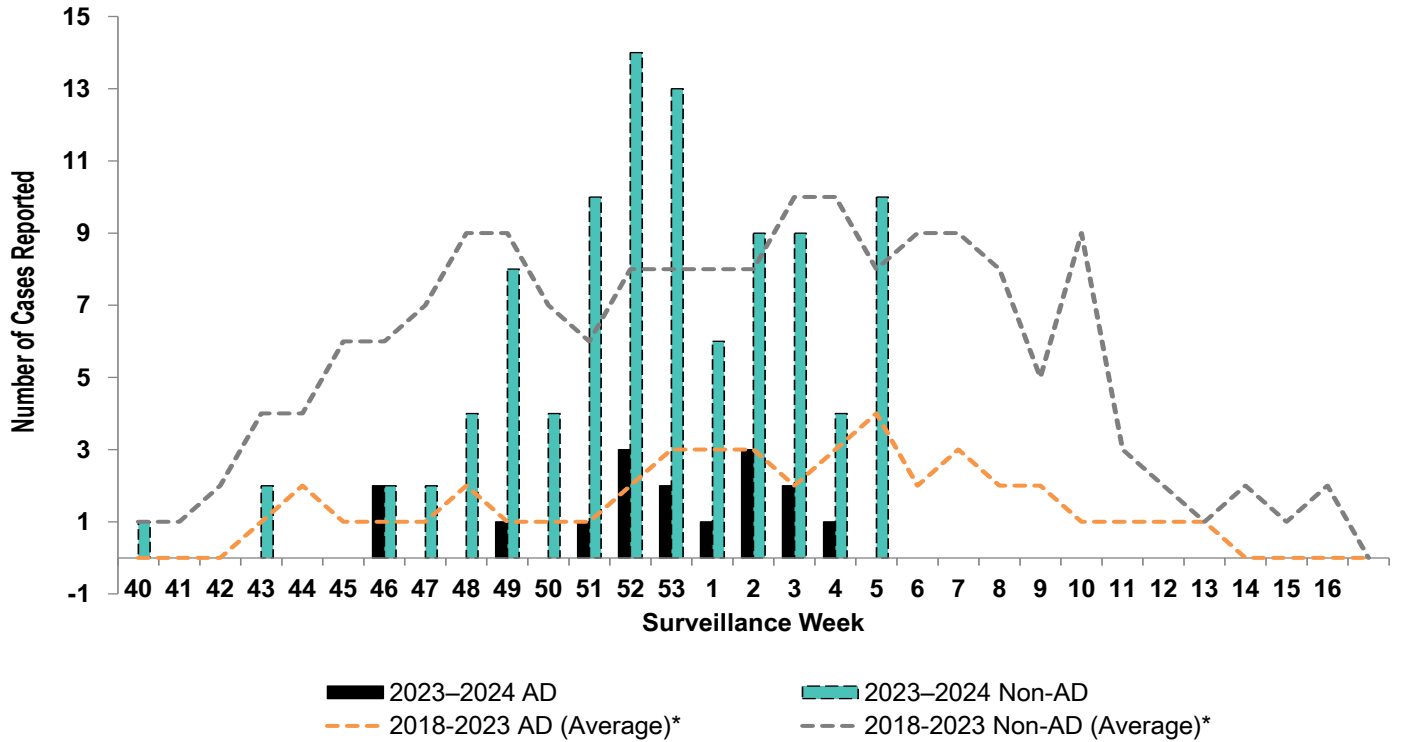
Number of Positive Influenza A Specimens by Region and Duty Status

Region	Week 2		Week 3		Week 4		Week 5	
	AD	Non-AD	AD	Non-AD	AD	Non-AD	AD	Non-AD
MRC-East	58	103	76	141	77	125	69	138
MRC-Europe	4	8	6	9	4	21	1	4
MRC-Pacific	24	24	32	30	15	22	11	26
MRC-West	107	204	121	305	128	324	74	218

Positive Respiratory Specimen Results from Army MTFs by Age Group and Beneficiary Status, Week 5

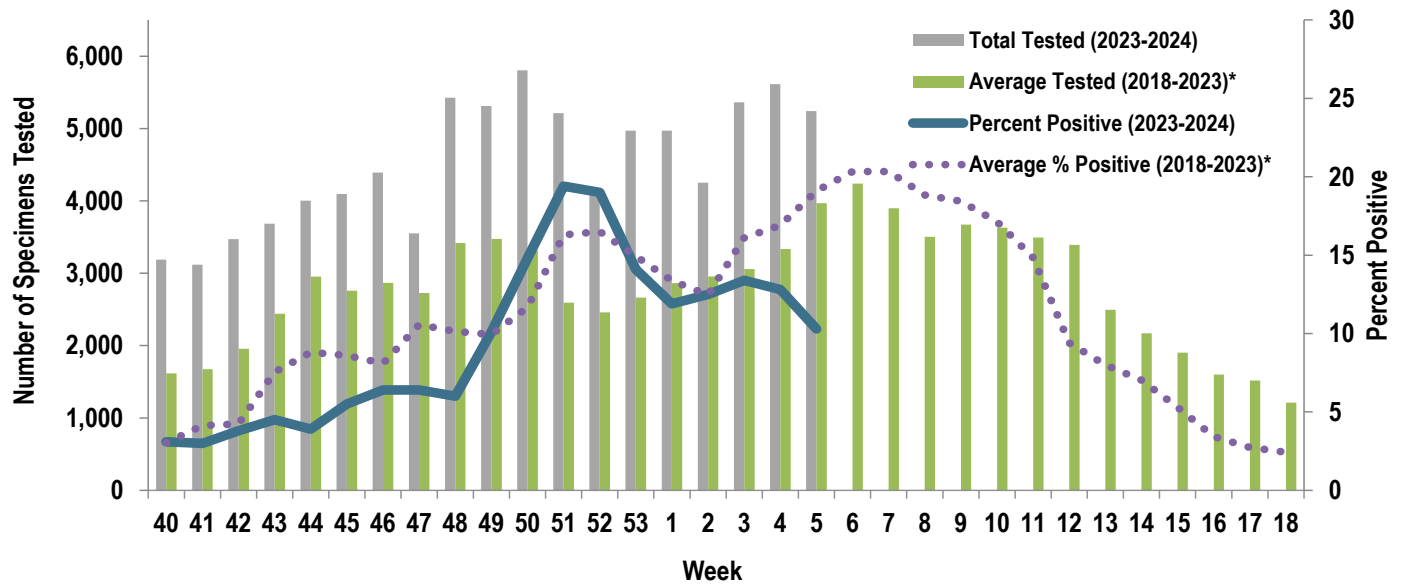


Army Influenza-Associated Hospitalizations Reported in DRSi by Onset Week



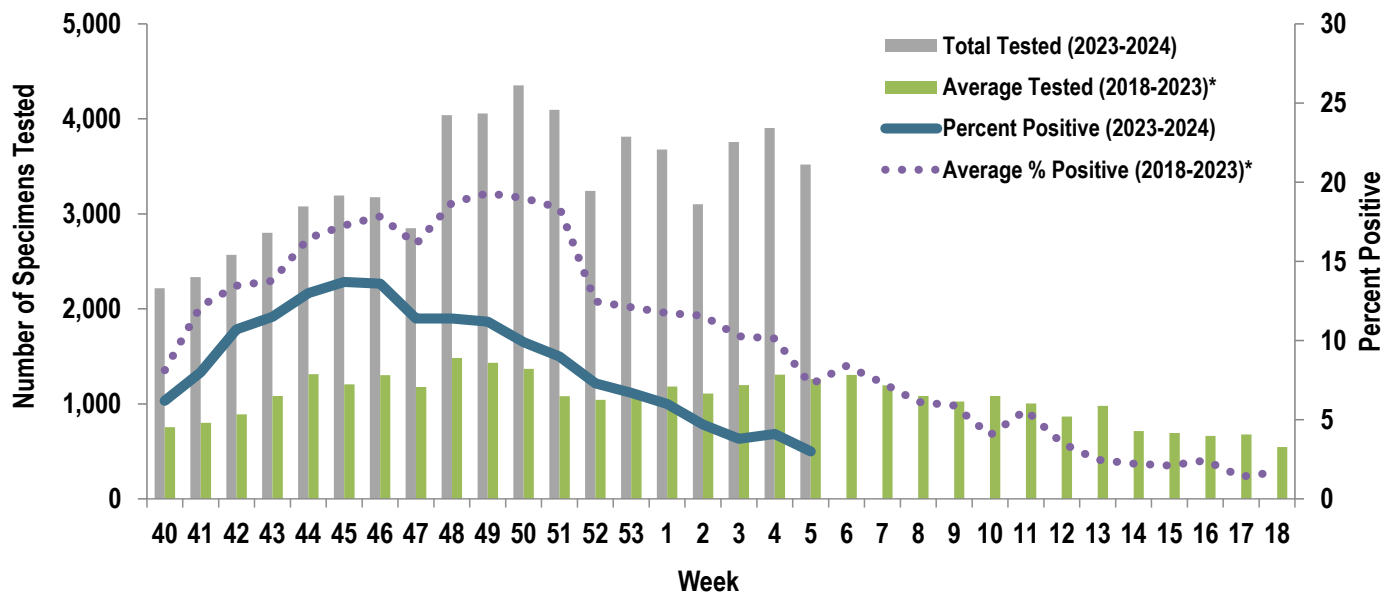
*2018-2019, 2019-2020, and 2022-2023 influenza seasons. Data from the 2020-2021 and 2021-2022 influenza seasons are not included in comparison calculations due to the unusually low incidence of influenza.

Proportion of Positive Influenza A Specimens for U.S. Army, 2023-2024



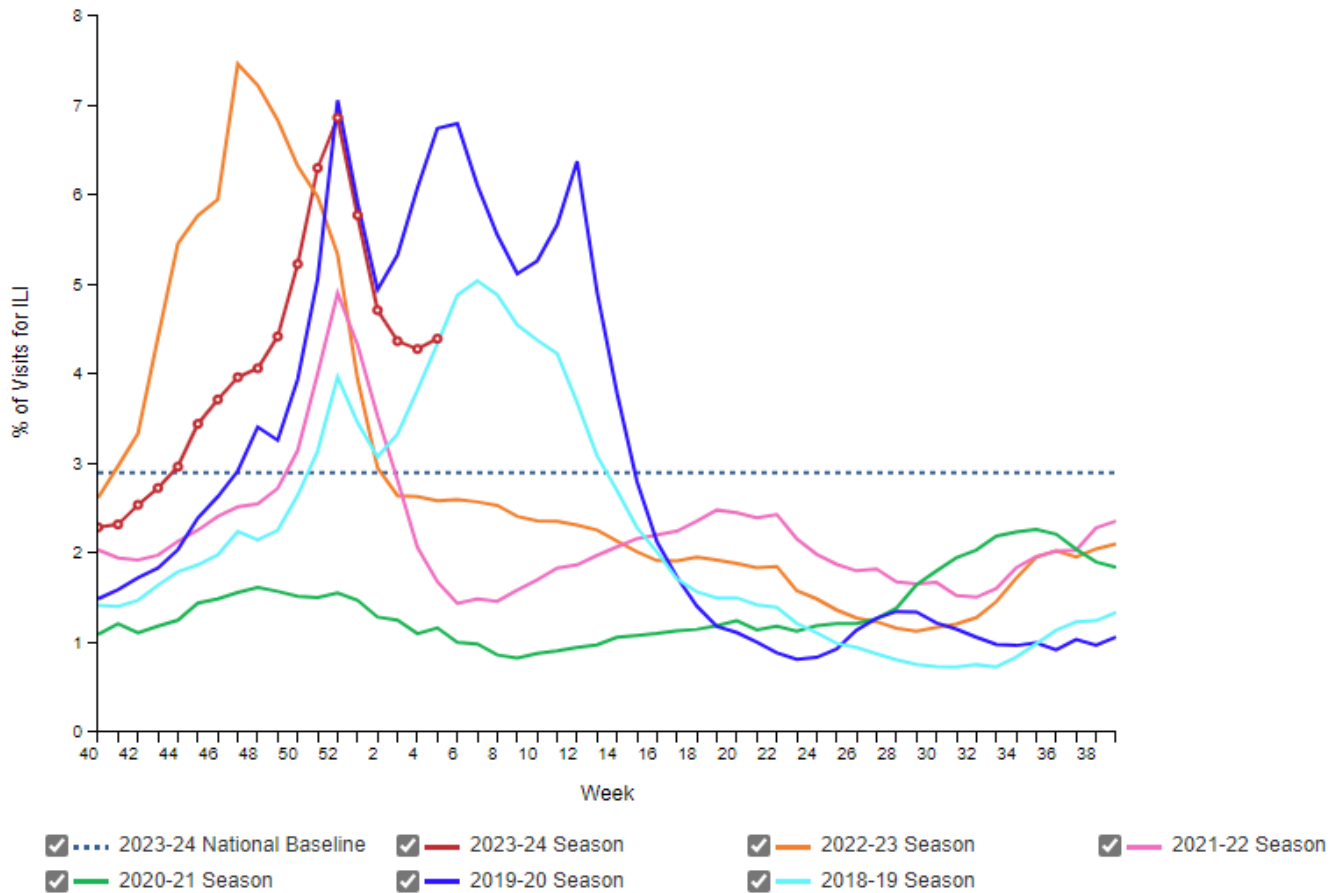
*2018–2019, 2019–2020, and 2022–2023 influenza seasons. Data from the 2020–2021 and 2021–2022 influenza seasons are not included in comparison calculations due to the unusually low incidence of influenza.

Proportion of Positive RSV Specimens for U.S. Army, 2023-2024



*2018–2019, 2019–2020, and 2022–2023 influenza seasons. Data from the 2020–2021 and 2021–2022 influenza seasons are not included in comparison calculations due to the unusually low incidence of influenza.

Percentage of Outpatient Visits for Respiratory Illness Reported by
The U.S. Outpatient Influenza-like Illness Surveillance Network (ILINet),
Weekly National Summary, 2023-24 Season and Selected Previous Seasons



Influenza Positive Tests Reported to CDC by U.S. Clinical Laboratories, National Summary, 2023-2024 Season

